

Community-Based Education: Innovation Beyond the Classroom

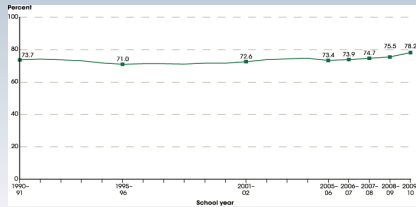
Dr. Lawrence Allen, Dean of Clemson
University's College of Health, Education,
and Human Development



National Dropout Prevention Center/Network at Clemson University

Solutions
TO THE DROPOUT CRISIS

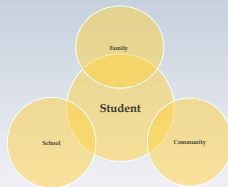
Graduation Rates (1990-2010)



National Dropout Prevention Center/Network at Clemson University

Solutions
TO THE DROPOUT CRISIS

Effective Education Involves Coordinated Effort



National Dropout Prevention Center/Network at Clemson University

Solutions
TO THE DROPOUT CRISIS

In-school Factors


Teacher Quality

School Leadership

School Climate

Class Size


School Facility

 National Dropout Prevention Center/Network at Clemson University

Solutions
TO THE DROPOUT CRISIS

“Decades of social science research have demonstrated that differences in quality of schools can explain about one-third of the variation in student achievement. But the other two-thirds is attributable to non-school factors.”

—Richard Rothstein, 2010, *How to Fix our Schools*

 National Dropout Prevention Center/Network at Clemson University

Solutions
TO THE DROPOUT CRISIS

Individual and Family Factors Impacting Student Achievement


Parents' Beliefs and Expectations About Education

Family Economic Status

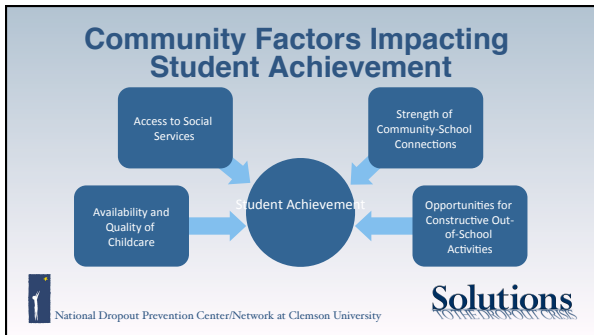
Physical and Mental Health

Persistence or Absence of Violence in a Child's Life

Student Achievement

 National Dropout Prevention Center/Network at Clemson University

Solutions
TO THE DROPOUT CRISIS



Coordinated Community-Based Efforts: Eight Strategic Efforts

1. Comprehensive and integrated early childhood development effort: 0-5

National Dropout Prevention Center/Network at Clemson University

Solutions
TO THE DROPOUT CRISIS

Coordinated Community-Based Efforts: Eight Strategic Efforts

2. Strong parent support system

National Dropout Prevention Center/Network at Clemson University

Solutions
TO THE DROPOUT CRISIS

**Coordinated Community-Based Efforts:
Eight Strategic Efforts**

3. Ensure that all students are reading at grade level, especially by grade three



National Dropout Prevention Center/Network at Clemson University

Solutions
TO THE DROPOUT CRISIS

**Coordinated Community-Based Efforts:
Eight Strategic Efforts**

4. Address chronic absenteeism



National Dropout Prevention Center/Network at Clemson University

Solutions
TO THE DROPOUT CRISIS

**Coordinated Community-Based Efforts:
Eight Strategic Efforts**

5. Build adult and peer support systems



National Dropout Prevention Center/Network at Clemson University

Solutions
TO THE DROPOUT CRISIS

**Coordinated Community-Based Efforts:
Eight Strategic Efforts**

6. Develop integrated after-school, and summer enrichment and remediation programs



National Dropout Prevention Center/Network at Clemson University

Solutions
TO THE DROPOUT CRISIS

**Coordinated Community-Based Efforts:
Eight Strategic Efforts**

7. Develop a seamless system of health care services and other public services on the school campus. Build adult and peer support systems



National Dropout Prevention Center/Network at Clemson University

Solutions
TO THE DROPOUT CRISIS

**Coordinated Community-Based Efforts:
Eight Strategic Efforts**

8. Develop an effective alternative school model for at-risk students



National Dropout Prevention Center/Network at Clemson University

Solutions
TO THE DROPOUT CRISIS

“Efforts to improve educational outcomes in these schools, attempting to drive change through test-based accountability, are thus unlikely to succeed unless accompanied by policies to address the out of school factors that negatively affect large numbers of our nation’s students.”

— Berliner, 2009, *Poverty and Potential: Out of School Factors and School Success*



National Dropout Prevention Center/Network at Clemson University

Solutions
TO THE DROPOUT CRISIS

Thank You!

To Contact Dean Larry Allen

laln@clemson.edu



National Dropout Prevention Center/Network at Clemson University

Solutions
TO THE DROPOUT CRISIS
